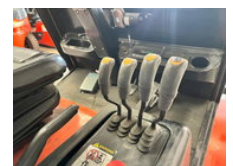


# AG Trucks

## Heli CPD50

### General features

Brand	Heli
Subcategory	Forklift
Construction year	2016
Hourmeter reading	845
Condition	Used
General condition	Good
Fuel	Electric
Reference	110866



### Characteristics

Empty weight	7.590kg
Serial number	5957
Lifting capacity	5.000kg
Lifting height	4.000mm
Mast type	Standard
Clearance height	2.900mm

# Heli CPD50

## Technical specifications

Transmission

Automatic

## Description

ID110866 BRAND: Heli MODEL: CPD50 CONSTRUCTION YEAR: 2016 ENGINE: Electric HOURS: 849 (Hours read from display)  
TRANSMISSION: Automatic MAST: 2 Stages HYDRAULIC VALVES: 4 x ATTACHMENT EQUIPMENT: Rotator, fork positioner LIFT  
CAPACITY: 5000 kg (Lifting capacity with rotator 4500kg) LIFT HEIGHT: 4000 mm CONSTRUCTION HEIGHT: 2900 mm  
HYDRAULIC VALVES: 4 FORKS LENGTH: 1600mm COLOR: Original

## Accessories

- rotating fork clamp