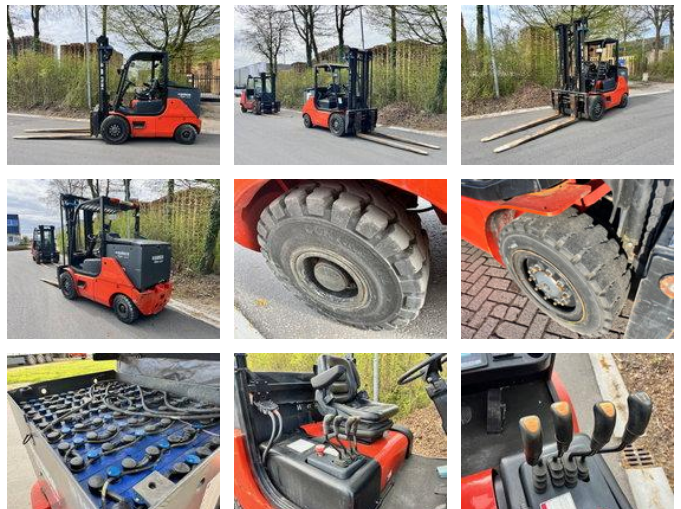


AG Trucks

Heli CPD40

General features

Brand	Heli
Subcategory	Forklift
Construction year	2016
Hourmeter reading	2644
Condition	Used
General condition	Good
Fuel	Electric
Reference	110870



Characteristics

Empty weight	6.700kg
Serial number	6867
Lifting capacity	4.000kg
Lifting height	3.500mm
Mast type	Standard
Clearance height	2.630mm

Heli CPD40

Technical specifications

Transmission

Automatic

Description

ID110870 BRAND: Heli MODEL: CPD40 CONSTRUCTION YEAR: 2016 ENGINE: Electric HOURS: 2644 (Hours read from display) TRANSMISSION: Automatic MAST: 2 Stages HYDRAULIC VALVES: 4 x ATTACHMENT EQUIPMENT: Side shift, fork positioner LIFT CAPACITY: 4000 kg LIFT HEIGHT: 3500 mm CONSTRUCTION HEIGHT: 2630 mm HYDRAULIC VALVES: 4 FORKS LENGTH: 2000mm COLOR: Original

Accessories